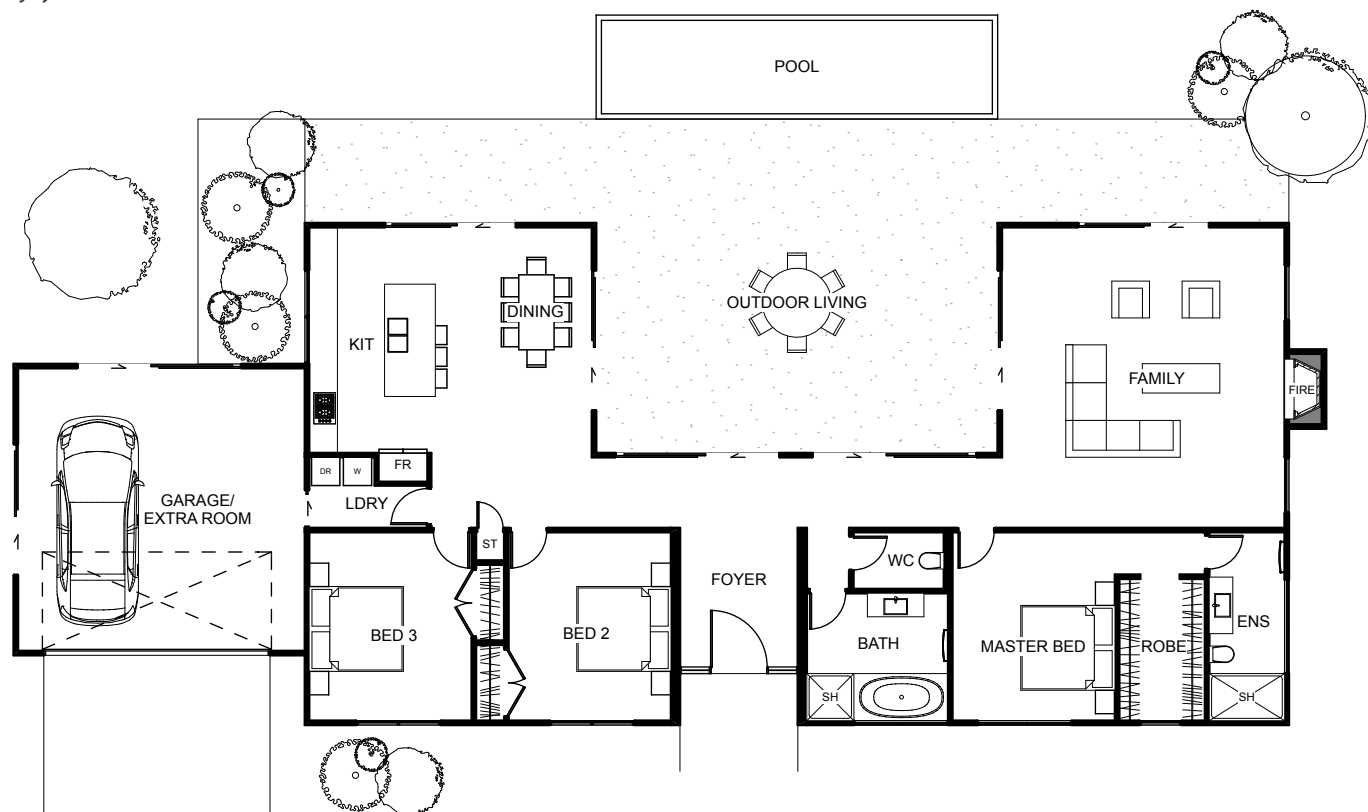


Tukupa



DWB
DW BUILDING & HOMES LTD

The Tukupa is a three bedroom home designed for simple family living. The master bedroom is complete with an ensuite and walk in wardrobe. This home has a well appointed open planned kitchen and dining space on one side with the living area located at the opposite end of the home, both opening out onto the outdoor living hub, creating a seamless indoor-outdoor flow, ideal for casual entertaining and relaxation. The Tukupa gives ample personal and entertaining space for everyone to enjoy.



Floor Area: 218m²

2 3 2 27.8m 10.7m

Contact Dylan:
M 027 2288 945
E info@dwbhomes.co.nz
www.dwbhomes.co.nz



New Zealand
Certified
Builders
Association



DWB
DW BUILDING & HOMES LTD